

# Roxsand

## Project Flavor - CJ Schwan's

Written by Mike Olson, Sales - Ace Ready Mix

As the construction season is wrapping up for most with the winter months ahead, Ace Ready Mix is just starting to get into full swing on a very unique project.

CJ Schwan's, "Project Flavor", is a 700,000 square foot Asian food production facility at Foundation Park in northwest Sioux Falls. This building, which spans the length of 12 football fields, will be one of the world's largest Asian food factories.

Ace Ready Mix was awarded the bid to supply all of the concrete for the interior floors, loading docks, and exterior concrete, which will be more than a thousand loads. Once awarded the contract, the teams from Ace and L. G. Everist started working on the mix designs for this project. Due to the engineered specifications, extensive testing had to be done and sent to the concrete engineers for approval. Because of the required FM spec, carefully selected aggregates were utilized to achieve the necessary performance standards.

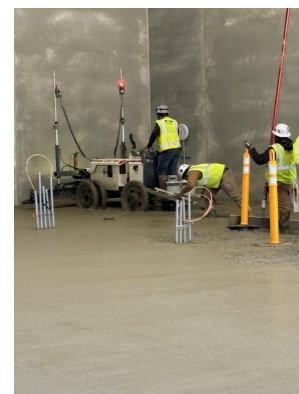
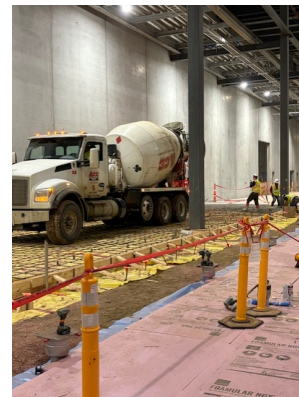
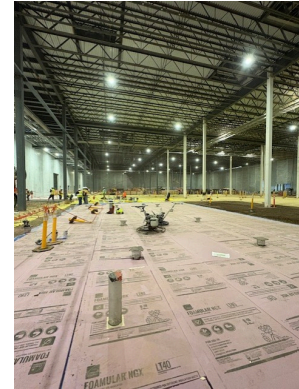
What makes this project so unique is the variety of concrete mix designs, the complexity of the floor systems, and the scheduling through the winter months, which requires another layer of coordination and consideration. Multiple mix designs are required for different areas of the facility, with some currently approved and in use, and others still progressing through the testing process.

Certain areas of the building require structural concrete with enhanced reinforcement, which includes the use of steel fibers in select mixes. As each Ready Mix truck is being loaded, additional team members must disperse the correct dosages of steel fibers into the concrete mix. This adds significant coordination between the contractor, Ace dispatch, batching operations, and our quality control team to ensure that product specifications are met.

This time of year, concrete temperatures are a major factor. Water needs to be heated through the boilers, not only to make sure the concrete temperature is in spec, but also to support proper set and finishing times for the contractor.

With all of the moving parts, multiple mix designs, and challenges that go along with this project, there is no doubt that the Ace Ready Mix team will make it a successful highlight that we can all be very proud of.

[Click here for the Spanish Version.. Haga clic aquí para la versión en español](#)



## Birthdays This Week

Carson Wiedemann - Nelson  
John Archuleta - Ragsdale

James Peterson - Dell Rapids East  
Mary Anderson - Summit

Harold Jackson - Ragsdale  
Chris Doland - Ace Ready Mix

Chris Park - D & I Railroad  
Michael Glovich - Ace Ready Mix

## Volunteer Nights at The Banquet Sioux Falls

Thank you to everyone who joined to serve supper, and for your positive attitudes while giving back!



Ace Ready Mix and Myrl & Roy's Team



Sioux Falls Office Team and Guests

If you know someone that would like to receive the Roxsand, have them send their personal email to [info@LGEverist.com](mailto:info@LGEverist.com) and request to be added to the mailing list or visit our website to sign-up.



L. G. Everist | 350 S Main Ave, Suite 400 | Sioux Falls, SD 57104 US

[Unsubscribe](#) | [Update Profile](#) | [Constant Contact Data Notice](#)



Try email marketing for free today!