

The Importance of Dispatch Efficiency

Written by Owen Matson, General Manager at Ace Ready Mix

Concrete dispatch efficiency is a critical factor in the construction industry, directly affecting project timelines, costs, and resource management. It refers to the effective coordination and management of concrete delivery to and from the job sites. Ensuring that concrete arrives in the optimal condition at the right time is critical to our success.

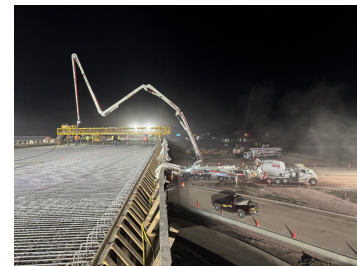
One key component of dispatch efficiency is precise scheduling. Establishing a well-defined timeline allows for proper labor force and machinery planning. This involves collaboration between the project managers, dispatchers, drivers and plant operators to plan, synchronize, and execute.

Not only is dispatch efficiency a top priority, but enhancing all facets of our operations is essential for timely project completion and cost management. By leveraging technology, optimizing logistics, and investing in training, we can continue to have even more success with our customers and technical projects.

Thank you to Phillip Krejci, Craig McCarthy, Ron Vander Maten, and John Doese at Myrl & Roys for your coordination.

Pictured on the right:

Ace Ready Mix Crews worked through the night to complete a critical bridgedeck pour. Trucks arrived in a steady rotation while the quality control team performed their testing to ensure the product met the strict standards.



[Click here for the Spanish version.. Haga clic aquí para la versión en español](#)

Milestone Anniversary: Tim Smith - D & I Railroad

Birthdays This Week

Pat Hollenbeck - 88th Transload
 Randall Limke - Myrl & Roy's
 Curt Swoyer - Sioux Falls
 Dane Anderson - Dell Rapids East
 Andrew Kranz - Dell Rapids East
 Adam Wesdorp - Ace Ready Mix
 Loren Schmitz - Ortonville
 Rick Everist Jr. - Sioux Falls
 Levi Reiners - Dell Rapids East
 Jacob Irwin - Ace Ready Mix
 Thomas Gannon - Ace Ready Mix
 Eric Croatt - Myrl & Roy's


L. G. EVERIST, INC.

REFERRAL BONUS

Do you know someone who would make a great addition to our team? We are looking for safe, reliable individuals interested in our industry.

You are eligible to receive:

-  \$200 when they start
-  \$150 when they reach 60 days
-  \$150 when they reach 90 days

FOR MORE INFORMATION
Contact your HR representative




Featured Photos

Have a photo to feature in the Roxsand or on social media? Email them to mjbarkley@lgeverist.com!



Jennifer Block and Wayne Dixon were recognized for their safety efforts and contributions in Ortonville.



Paul Klemme highlighted the importance of the SLAM efforts Josh Brunsting has contributed.



Charlie Mohning was recognized by Lee Saude for his efforts on safety at the Akron Shop.

If you know someone that would like to receive the Roxsand, have them send their personal email to info@LGEverist.com and request to be added to the mailing list.

L. G. EVERIST, INC. | 350 S Main Ave, Suite 400
info@lgeverist.com | 605-334-5000



L. G. Everist | 350 S Main Ave, Suite 400 | Sioux Falls, SD 57104 US

[Unsubscribe](#) | [Update Profile](#) | [Constant Contact Data Notice](#)



Try email marketing for free today!