

# Roxsand

## The Art of Delivering Solutions

Written by Reed Schade, AVP Midwest

At any L. G. Everist location, it doesn't take long before you see or hear our slogan: "Delivering Solutions." Whether we're supporting a multimillion-dollar construction project or a municipality's annual maintenance program, our products and services are built to meet our customers' needs.

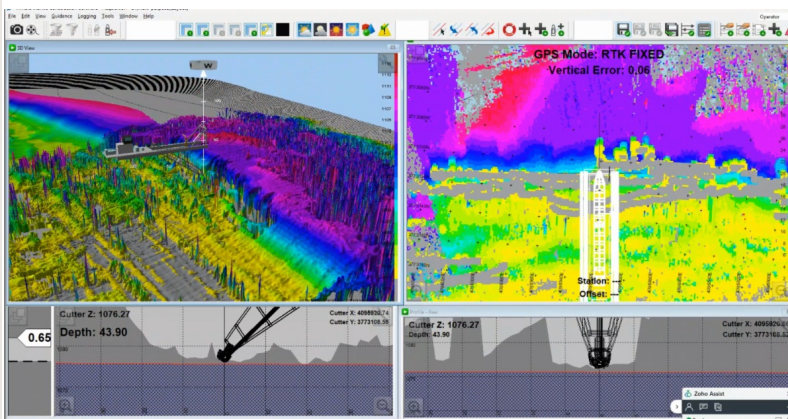
In our aggregate production facilities, we face daily challenges that demand solutions rooted in sound decision-making. Some decisions have immediate, short-term impacts; others can shape operations for years. Problem-solving is a critical skill that applies to every area of life—from personal hurdles to professional obstacles. At its core, effective problem-solving means identifying the issue, analyzing potential causes, developing solutions, and implementing the most effective course of action.

The process starts with a clear and accurate understanding of the problem. Inaccurate or incomplete information often leads to poor decisions. Misidentifying the issue wastes time and leads to ineffective outcomes. Considering multiple perspectives and generating various solutions helps in finding the most suitable path forward.

It's also important to ask: What's the optimal outcome—and what's realistic? Quick fixes may feel satisfying, but we must balance creativity with practicality to ensure we meet both short- and long-term goals. The easiest answer isn't always the best one.

Success requires a well-developed plan, clear communication, and continuous monitoring of progress. Our season-long production plans are complex. They require hours of data compilation and organization to evaluate inventory levels, sales timelines, and production rates. While we don't always make the right decision, in most cases, we have the opportunity to make the decision right. Adjustments are part of the journey.

Whether we're delivering a solution to a customer or overcoming a breakdown at the plant, our ability to solve problems quickly and efficiently is what sets us apart from the competition.



**Pictured above:** Ortonville team working on the 56"x72" 100-year-old jaw crusher, when repair parts and manuals are nonexistent, the crew had to come up with a creative solutions to solve a complex problem within a strict schedule.

**Pictured to the left:** Dredge 3-D GPS Position System in Akron, IA that provides the dredge operator with real time position information to maximize production efficiency.

## Birthdays This Week

Adrian Rodriguez Avalos - Fort Lupton  
Brandon Ostert - Henderson  
Rodolfo Molina Rascon - Firestone  
Edward Gaye - Ace Ready Mix  
Phillip Krejci - Ace Ready Mix  
Dylan Arndt - Dell Rapids Shop  
Kevin Mayer - Sioux Falls  
Bruce Rohwer - Washta  
Evan Schade - Brookings  
Bryan Heubrock - Myrl & Roy's  
Steve Brunick - Ace Ready Mix  
Chris Wilkins - Fort Lupton

## Milestone Anniversaries

Joshua Otten - Hawarden Cement  
Antonio Orosco - Ragsdale

## School Supply Drives Underway

School supply drives are underway at some of our locations in the Midwest.

Our current Midwest drop-off locations include:

- Sioux Falls Corporate Office
- Myrl & Roy's - Rice Street
- Ace Ready Mix - Rice Street
- 9 Mile Park
- East Sioux Quarry
- Dell Rapids East
- Dell Rapids West
- Brookings
- Ortonville

Employees, if your location is not listed and you would like to donate, please bring in new school supply items to your plant manager by July 31st.



## Relay for Life Event

This past Saturday, employees and spouses from L. G. Everist's Mountain Division took time out of their weekend to attend the *Relay for Life* event in Greeley, hosted by the American Cancer Society. The event is dedicated to honoring cancer survivors, supporting those currently fighting, and remembering those we've lost.

Our team was especially proud to support Rhiannon Gross (Ragsdale Scale Master), who is currently undergoing treatment and was joined at the event by her daughter and granddaughter. We were also there to support some of our customers who are cancer survivors themselves or have been personally affected through their families, and who help organize and host this meaningful event each year.

Thank you to everyone who came out to stand with us and be part of such an impactful cause.



If you know someone that would like to receive the Roxsand, have them send their personal email to [info@LGEverist.com](mailto:info@LGEverist.com) and request to be added to the mailing list.

**L. G. EVERIST, INC.** | 350 S Main Ave, Suite 400  
[info@lgeverist.com](mailto:info@lgeverist.com) | 605-334-5000

