

Roxsand

Old Meets New

With Punxsutawney Phil's prediction behind us, we can officially look forward to a warm and wonderful spring! That also means winter maintenance is wrapping up, and full production is just around the corner. Throughout the winter season, all our plants have been undergoing routine maintenance and upgrades to meet the production goals set for the year.

One of the most exciting upgrades this winter has been the new sand plant at our Hawarden location. Parts of the original sand plant were relocated in 1962 from the original Hawarden site south of town to where it stands today. This latest reconfiguration and improvement will double Hawarden's sand production capacity.

The upgrade comes at the perfect time, driven by increasing demand for sand in the Sioux Falls market—especially with our soon-to-be operational Harrisburg Terminal. Ensuring a steady supply of sand to Sioux Falls made this investment essential.

As we wrap up this season of upgrades and maintenance across the company, remember—don't let pressure compromise safety or the quality of work that helps us achieve our goals. Throughout this project, Alec Riswold and the Hawarden crew have done a great job at this!

The first two photos on the right are of the new Hawarden sand plant. The photo on the bottom is of the new Harrisburg Terminal.



[Click Here for the Spanish Version](#)

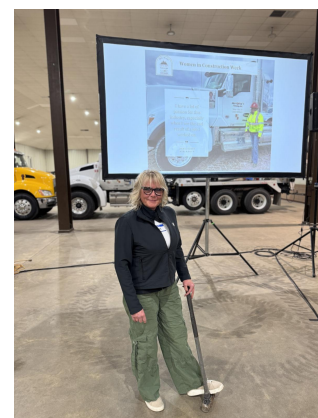
Written by Colin Taylor, Mine Project Engineer



Last week, Bob Hoffman was recognized for completing the MSHA Silica, Noise, and Dust Certification Course through the Mine Safety and Health Administration Academy.



Christine Therkildsen, Megan Barkley, Candy Klingensmith, and Jennifer Barber attended the 2025 SME Women in Business Conference on behalf of LGE.



Jaimie Koepp gave a moving testimonial about the importance of the camera systems in our fleets at the 2025 Safety Kickoff for Myrl & Roy's and Ace Ready Mix.

Applications for the LGE Scholarship are Open



L. G. Everist, Inc. is currently accepting applications for the L. G. Everist, Inc. Scholarship Program. The deadline to apply is April 30, 2025. Employees with dependents going to a technical college or university in the fall of 2025 are encouraged to apply. Application and rules can be found using the following link: [Scholarship Page](#)

Happy Birthday

Luis Rodrigo Montalvo - March 29
Ragsdale

Ruby Anderson - April 01
Ace Ready Mix

Tanner Peterson - April 01
Akron Shop

Zachariah Mattson - April 01
Washta

Paul Klemme - April 03
Akron

Anniversary

Keith Eiss - March 30
Washta- 5 Years

Don't Forget the Referral Bonus!

We wanted to remind you of the fantastic opportunity available at all companies - by referring talented individuals to join L. G. Everist, Ace Ready Mix, D & I Railroad, or Myrl & Roy's Paving, you not only help us grow and strengthen our teams, but you also have the chance at earning a rewarding bonus. We thrive because of the incredible people who work here, and your network could be the key to finding the next great fit. We are looking for safe, reliable individuals interested in our industry. Below are more details about the referral bonus.

If the individual you refer is hired, you are eligible to receive:

- \$200 when they start
- \$150 when they reach 60 days
- \$150 when they reach 90 days

For more information, contact your HR representative!

[L. G. EVERIST, INC.](#) | 350 S Main Ave, STE 400, Sioux Falls, SD
info@lgeverist.com | 605-334-5000



L. G. Everist | 350 S Main Ave, Suite 400 | Sioux Falls, SD 57104 US

[Unsubscribe](#) | [Update Profile](#) | [Constant Contact Data Notice](#)



Try email marketing for free today!